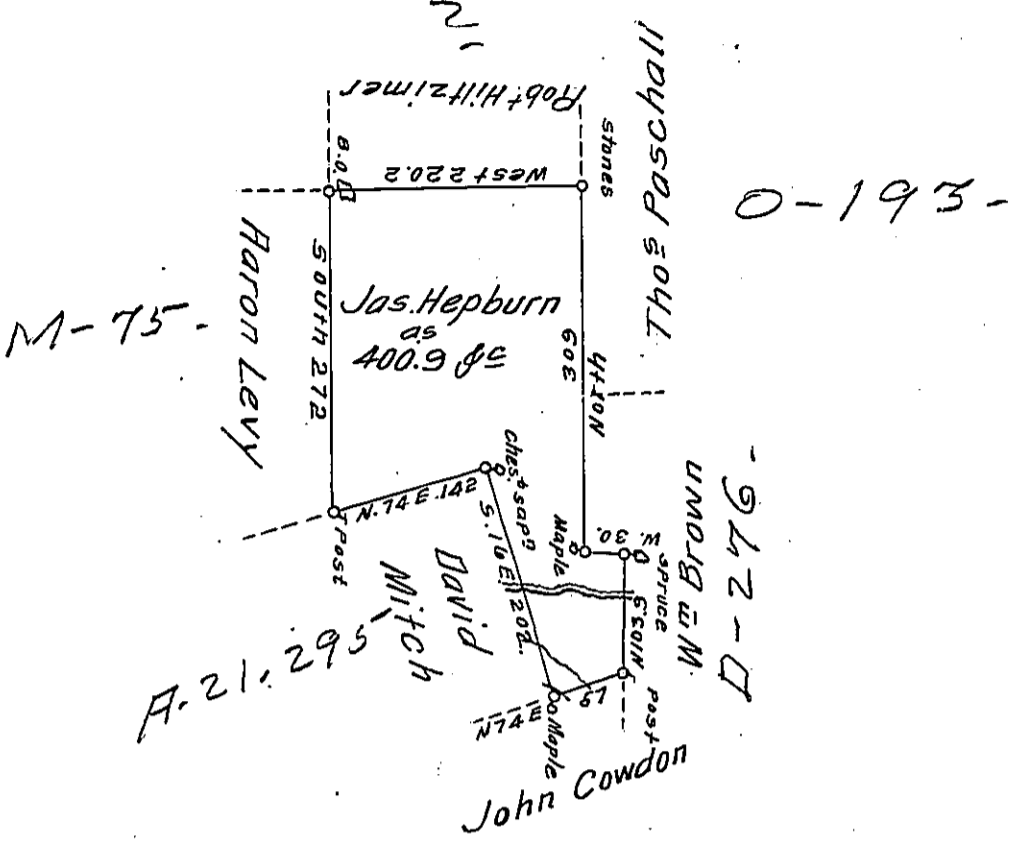


Foster -  
Luzerne



A Draft of a tract of land Called — Situate on the Waters - Black Creek  
 in the County of Northum<sup>d</sup> Containing four Hundred Acres <sup>9</sup>/<sub>10</sub> and  
 allow<sup>e</sup>. Surveyed for Ja<sup>s</sup> Hepburn the 9<sup>th</sup> Day of Sep<sup>r</sup> 1793 by Virtue of a  
 Warrant dated the 13<sup>th</sup> Day of June 1793.

To Daniel Brodhead Esq<sup>r</sup> }  
 Surv<sup>r</sup> Gen<sup>l</sup> } by W<sup>m</sup> Gray D.S.

IN TESTIMONY that the above is a copy of the original remaining on file in  
 the Department of Internal Affairs of Pennsylvania, made  
 conformably to an Act of Assembly approved the 16th day of  
 February, 1833, I have hereunto set my Hand and caused  
 the Seal of said Department to be affixed at Harrisburg,  
 this eighth day of May 1911.

*Henry Horck*  
 Secretary of Internal Affairs.